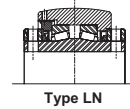
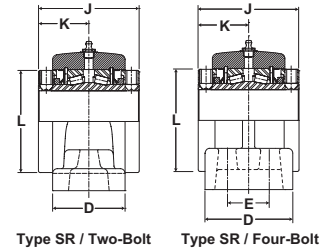
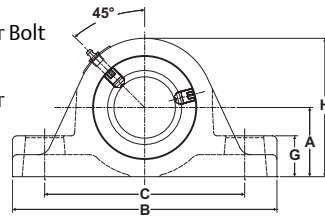


E920 Series Bearings *Browning*[®]



Rolling Elements: Tapered Roller
Housing: Cast Iron, Two And Four Bolt Pillow Blocks
Lock: Setscrew, Double Collar
Seal: Contact
Temperature: -20°F to 200°F



Mtd. Tapered Bearings



PBE920 Series Two and Four-Bolt Base Pillow Blocks

Bore Diameter	Part No.	Basic Dynamic Rating lb/N	Type*	Dimensions inch / mm													Unit Wt. lb/kg
				A	B	C		D	E	G	H	J	K	L	Bolt Size		
						Min.	Max.								2 Bolt	4 Bolt	
1 3/16	PBE920x 1 3/16	2975	SR	1 1/2	6 3/8	4 5/16	5	1 7/8	----	7/8	3	2 3/4	1 25/64	2 1/4	1/2	----	4.0
1 1/4	PBE920x 1 1/4	13233		38.1	161.9	109.5	127.0	47.6	----	22.2	76.2	69.9	35.3	57.2	----	1.81	
1 3/8	PBE920x 1 3/8	4760	SR	1 7/8	7 3/8	5	6	2 1/8	----	1 1/8	3 3/4	3	1 1/2	2 3/4	1/2	----	6.9
1 7/16	PBE920x 1 7/16	21172		47.6	187.3	127.0	152.4	54.0	----	28.6	95.3	76.2	38.1	69.9	----	3.1	
1 1/2	PBE920x 1 1/2	6140	SR	2 1/8	7 7/8	5 11/16	6 1/2	2 1/2	----	1 1/4	4 1/4	3 3/8	1 11/16	3 3/16	1/2	----	9.5
1 5/8	PBE920x 1 5/8	27311		54.0	200.0	144.5	165.1	63.5	----	31.8	108.0	85.7	42.9	81.0	----	4.31	
1 11/16	PBE920x 1 11/16																
1 3/4	PBE920x 1 3/4	8070	SR	2 1/4	8 7/8	6 3/16	7 1/4	2 1/2	----	1 1/4	4 1/2	3 1/2	1 3/4	3 7/16	5/8	----	10.9
1 15/16	PBE920x 1 15/16	35895		57.2	225.4	157.2	184.2	63.5	----	31.8	114.3	88.9	44.5	87.3	----	4.94	
2	PBE920x 2																
2 3/16	PBE920x 2 3/16	8570	SR	2 1/2	9 5/8	6 11/16	8	2 5/8	----	1 7/16	5	3 3/4	1 7/8	3 3/4	5/8	----	14.0
		38119		63.5	244.5	169.9	203.2	66.7	----	36.5	127.0	95.3	47.6	95.3	----	6.35	
2 1/4	PBE920x 2 1/4	9030	SR	2 3/4	10 1/2	7 1/8	8 3/4	2 7/8	----	1 5/8	5 1/2	4	2	4 1/16	5/8	----	19.0
2 7/16	PBE920x 2 7/16	40165		69.9	266.7	181.0	222.3	73.0	----	41.3	139.7	101.6	50.8	103.2	----	8.62	
2 1/2	PBE920x 2 1/2																
2 11/16	PBE920x 2 11/16	9630	SR	3 1/8	12	8 7/16	9 3/4	3	----	1 3/4	6 1/4	4 1/2	2 1/4	4 23/32	3/4	----	26.0
2 3/4	PBE920x 2 3/4	42834		79.4	304.8	214.3	247.7	76.2	----	44.5	158.8	114.3	57.2	119.9	----	11.79	
2 15/16	PBE920x 2 15/16																
3	PBE920x 3																
3 3/16	PBE920x 3 3/16	15320	LN	3 3/4	14	9 3/4	11 1/2	3 5/8	----	2 1/8	7 1/2	5	2 1/2	5 7/16	7/8	----	44.0
3 7/16	PBE920x 3 7/16	68143		95.3	355.6	247.7	292.1	92.1	----	54.0	190.5	127.0	63.5	138.1	----	19.96	
3 1/2	PBE920x 3 1/2																
2 1/4	PBE920Fx 2 1/4	9030	SR	2 3/4	10 1/2	7 1/8	8 3/4	3 1/2	1 7/8	1 5/8	5 1/2	4	2	4 1/16	----	5/8	19
2 7/16	PBE920Fx 2 7/16	40165		69.9	266.7	181.0	222.3	88.9	47.6	41.3	139.7	101.6	50.8	103.2	----	8.62	
2 1/2	PBE920Fx 2 1/2																
2 11/16	PBE920Fx 2 11/16	9630	SR	3 1/8	12	8	9 7/8	4	2 1/8	1 3/4	6 1/4	4 1/2	2 1/4	4 23/32	----	5/8	26
2 3/4	PBE920Fx 2 3/4	42834		79.4	304.8	203.2	250.8	101.6	54.0	44.5	158.8	114.3	57.2	119.9	----	11.79	
2 15/16	PBE920Fx 2 15/16																
3	PBE920Fx 3																
3 3/16	PBE920Fx 3 3/16	15320	LN	3 3/4	14	9 11/16	11 7/16	4 1/2	2 3/8	2 1/8	7 1/2	5	2 1/2	5 7/16	----	3/4	44
3 7/16	PBE920Fx 3 7/16	68143		95.3	355.6	246.1	290.5	114.3	60	54.0	190.5	127.0	63.5	138.1	----	19.96	
3 1/2	PBE920Fx 3 1/2																
3 15/16	PBE920Fx 3 15/16	20980	LN	4 1/4	15 1/4	10 7/16	12 7/8	4 1/2	2 1/4	2 7/16	8 1/2	6 1/4	3 1/8	5 15/16		3/4	65
4	PBE920Fx 4	93319		108.0	387.4	265.1	327.0	114.3	57.2	61.9	215.9	158.8	79.4	150.8		29.48	
4 7/16	PBE920Fx 4 7/16	25750	LN	4 3/4	16 5/8	11 1/4	13 7/8	4 5/8	2 1/2	2 3/4	9 3/8	6 3/4	3 3/8	6 13/32	----	3/4	65
4 1/2	PBE920Fx 4 1/2	114536		120.7	422.3	285.8	352.4	117.6	63.5	69.9	238.1	171.5	85.7	162.7	----	29	
4 15/16	PBE920Fx 4 15/16	35520	LN	5 1/2	18 1/2	13	15 7/8	5 1/8	2 3/4	3 1/8	10 7/8	7 1/4	3 5/8	7 13/32	----	7/8	132
5	PBE920Fx 5	157993		139.7	469.9	330.2	403.2	130.2	69.9	79.4	276.2	184.2	92.1	188.1	----	59.87	

*Type LN and SR are different internal mounting configurations as shown in line drawings.

Metric dimensions for reference only.

Not all parts are available from stock. Please contact customer service for availability (800) 626-2120.

For more information on bearing capabilities outside of our standard offering, please contact Application Engineering (800) 626-2093.